

Order Tonight's Year 2002 Recording!

Featuring
The Compton Heights Band
Hugh Smith
St. Louis Hills Chorus

Tonight we are recording the concert on audio and video. To recapture and relive this memorable occasion, we will be pleased to take your order tonight! Fill out the form below and turn in at the promotional table in the lobby or mail/FAX in later. Projected Release Date: July 2003. (Note: This recording may not include Peter Nero portions due to contractual limitations.)

Name _____
Address _____
City _____ State ___ Zip _____
Phone Day _____ Night _____
Check payable to: Compton Heights Band, Inc.
Visa/MC/Disc./AmEx. _____
Expires: _____

Circle One or Both:
CD (\$25) video (\$30)

Special Offer! CD & Video \$45! Save \$10
(Includes postage/handling)

Checks Payable and Send/FAX to:

Compton Heights Band, Inc.
2335 So. Grand
St. Louis, Missouri 63104
Phone: (314) 776-2227 FAX: (314) 772-9797

The Compton Heights Concert Band

Edward Dolbashian, Music Director/Conductor
Harry F. Swanger, President/Executive Director

Presents

A Holiday Spectacular

with

Peter Nero

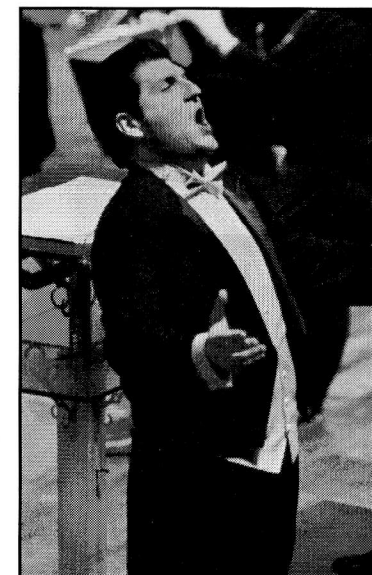
Michael Barnett, Bassist

George Mazzeo, Drums

and

Hugh Smith, Tenor

Special Guests: St. Louis Hills Chorus, John Powel Walsh, Director



Powell Symphony Hall
Monday, December 23, 2002

The Compton Heights Concert Band

- 1976 Band Formed in living room in Compton Heights neighborhood
- 1977 First Concert in Tower Grove Park
- 1979 First Holiday Pops Concert
- 1980 *TuneFul Tuesdays* now *Musical Mondays* summer concert series in Tower Grove Park
- 1983 VP Fair-audience of 1 million, band bus ends in river!
- 1984 Band charity bingo begins
- 1986 *Sunday Serenades* concert series in Francis Park begins
- 1988 Band hosts Association of Concert Bands Convention
- 1989 First Tour to St. Joseph and Omaha
- 1992 First indoor series - Band on Grand
- 1992 First Missouri Arts Council tour - Hermann, MO
- 1998 First Powell Symphony Hall Concert
- 2000 "Sunrise Serenades" TV Show Aired for 18 months on Saturdays, KMOV, Channel 4, CBS
- 2001 Band celebrates its 25th Anniversary!
- 2002 First *Sousa Saturdays* series in Laumeier Sculpture Park

The driving force behind the Compton Heights Concert Band is a preservationist philosophy determined to promote the American Concert Band, the unique American art form created by Patrick Gilmore in the 1860's and perfected by John Philip Sousa at the turn of the last century, and to play the fine concert band literature of yesteryear. As with jazz, another unique American art form, concert bands and concert band literature are undergoing a resurgence in America as we embark on a new millennium. Sousa's concerts were dubbed "the world's greatest pops concerts". In this tradition, a Compton Heights Concert Band concert features programming appealing to all ages and musical tastes; "something for everyone".

From its modest beginning in the Compton Heights neighborhood livingroom of band organizer, President and Executive Director, **Harry F. Swanger**, in 1976, the Band quickly became a metropolitan St. Louis area tradition, attracting over 50,000 listeners annually to its famed dual summer series, *Sunday Serenades* in Francis Park and *Musical Mondays* in Tower Grove Park. In addition, last summer the Band presented *Sousa Saturdays*, a three part series, in Laumeier Sculpture Park. The Band performs at annual holiday concerts and metro area events such as the Old Courthouse. Featured artists include: Hugh Smith, tenor; Arturo Sandoval, jazz/classical trumpet wizard; Sukay, "Music of the Andes"; Alex Klein, Chicago Symphony's principal oboist; James Christensen, former Music Director, Walt Disney World; BNFL Brass Band; Jerry Robinson & Sax-O-Peel, The Lennon Brothers; the late William Warfield, Baritone; Debby Turner, marimba; Ricardo Morales, Metropolitan Opera principal clarinet; Nuclear Whales Saxophone Orchestra; Myron Floren, accordion; Jean Kittrell & The St. Louis Rivermen, Keith Brion, Sousa portrayer; The Legend Singers; The St. Louis Hills Chorus; and our own vocal duo of Robert Ellison and Beverly Stewart-Anderson. The Band also tours in Missouri under the auspices of the State Missouri Arts Council and will be appearing at the Joplin Pops in Joplin, Missouri next June. This marks the 3rd appearance of the Compton Heights Band in the Joplin Pops series.

Edward Dolbashian, Music Director & Conductor, is the orchestra and opera conductor at the University of Missouri, Columbia, the Kirkwood Symphony, and the Alton Symphony Orchestra, Alton, Ill. Appointed conductor of the Compton Heights Concert Band in September, 1998, he is also a professional oboe and English Horn player. The announcer is **Lucy Schroeder**, wife of band vice-president and tubist **Jon Schroeder**, who is an original member of the Compton Heights Band! Lucy injects a lively sense of humor and aids the audience appreciation of the music.

In addition to weekly Band rehearsals, members devote thousands of volunteer hours at its charity bingos at Bandwagon Hall, 6245 Lemay Ferry Road, 845-1877. The Band is also financially supported by Catherine Manley Gaylord Foundation, Clifford Willard Gaylord Foundation, Foot and Ankle Associates, Hoffmeister Mortuaries, Laumeier Sculpture Park, Regional Arts Commission, Southwest Bank, St. Louis Philanthropic Organization, and the St. Louis Parks & Recreation Department. To make a tax-deductible donation mail to Compton Heights Band, 2335 So. Grand, St Louis, Mo. 63104 or call (314) 776-2227. Web site: www.chband.org

Hugh Smith

Hugh Smith hails from Lebanon, Ohio. He holds a Masters in Music from Bowling Green State U., Ohio, and a Masters in Fine Arts from the Academy of Vocal Arts, Philadelphia. He has appeared with orchestras and opera companies all over the world.

Hugh has appeared as guest soloist with the Compton Heights Concert Band every year since 1997, following his introduction to St. Louis at the St. Louis Symphony Holiday Pops Concerts in 1996 with Richard Hayman. Audiences in St. Louis who have heard him perform with the Band or with the St. Louis Symphony, continue to demand his return!

Awards: 1993 International Friedrich Schorr Competition, 1994 Metropolitan Opera National Auditions, 1994 Mario Lanza Competition, 1995 Luciano Pavarotti International Competition, 1996 Plácido Domingo International Competition, 1997 Sullivan Foundation Award.

Soloist with: American Symphony Orchestra and Concert Chorale of New York, Fort Wayne Symphony, Kennedy Center Awards in honor of Luciano Pavarotti, Philadelphia Orchestra, Pacific Symphony Orchestra, and St. Louis Symphony Orchestra.

Concert Performances: Beethoven's Ninth (Puerto Rico Symphony), *Die Liebe der Danae* (Avery Fisher Hall, NY), Dvorak's *Stabat Mater* (Beethovenhall, Bonn), *Giovanna d'arco* (Carnegie Hall), *Le Roi Arthur* (Avery Fisher Hall), *Les Troyens* (Edinburgh Festival), *Nabucco* (Carnegie Hall), *Tosca* (Met in the Parks, NY), *Verdi Requiem* (Bologna, teatro comunale).

World Premier: An American Requiem by Richard Danielpour on November 14/15, 2001.
Recordings: *An American Requiem* by Richard Danielpour; King Midas in *Die Liebe der Danae* by R. Strauss (Avery Fisher Hall, NY).

Opera Performances: Alfredo, *La Traviata* (Lyric Opera of Chicago, Opera de Puerto Rico, Lisbon); Forresto, *Attila* (Lyric Opera of Chicago, Bologna, Parma); Cavaradossi, *Tosca* (Netherlands Opera); Des Grieux, *Manon Lescaut* (Munich, Opera Pacific); Don Carlo, *Don Carlo* (Opera de Paris); Don Jose, *Carmen* (Toledo Opera; Michigan Opera Theatre, Detroit, Opera Company of Philadelphia); Duke, *Rigoletto* (Hamburg); Faust, *Faust* (Dayton); King Midas, *Die Liebe der Danae* (Avery Fisher, NY); Laca, *Jenufa* (Lyric Opera of Chicago, Charleston, Spoleto USA); Lenski, *Eugene Onegin* (Academy of Vocal Arts, Phil.); Manrico, *Il Trovatore* (Academy of Vocal Arts, Phil.); Matteo, *Arabella* (Chatelet Theatre de Musicale de Paris); Pollione, *Norma* (Opera Geneve, Berlin Staatsoper); Pinkerton, *Madama Butterfly* (Houston, San Francisco, Napoli, Teatro San Carlo); Riccardo, *Un Ballo in Maschera* (Academy of Vocal Arts); Rodolfo, *La Boheme* (Cincinnati, Toledo, Dayton, Hamburgische Staatsoper).

Fans tour the world! Many have traveled the world to see Hugh perform. In the last five years, groups have traveled to Amsterdam, Hamburg, Detroit, Toronto, Paris, London and Munich. The tours are guided by Harry Swanger (Compton Heights Band Executive Director) and Kitty Swanger. **This marks the 13th appearance of Hugh Smith with the Compton Heights Band.** We used to call Hugh, "The Fourth Tenor". A local pundant recently suggested we call him "The First Tenor". And we agree!

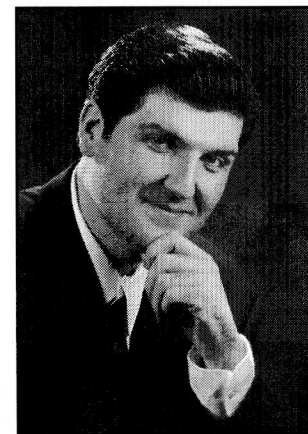
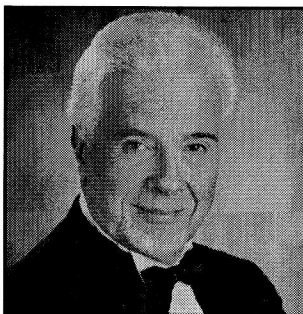


Photo by Barry Dierkes

Peter Nero



This season marks Peter Nero's 40th Anniversary since the receipt of his first GRAMMY® Award in 1962. Avirtuoso pianist, Mr. Nero has built an impressive career as a Pops conductor, arranger and composer. His solid musicianship, innovative programming and warm, informal stage presence have won him a loyal and enthusiastic audience. The Virginian-Pilot recently hailed him as "a high-class showman, a pianist with dazzling technical virtuosity and inspired improvisation, and a solid leader of the Virginia Symphony with which he shared the stage." The Washington Post dubbed him "the epitome of the Pops Conductor / Performer."

Entering his third decade as Music Director of Peter Nero & The Philly Pops, he looks forward to celebrating the Pops' 25th Anniversary with a television documentary and other special events. This will also be the first full season for Peter & his Pops as they continue to bring enormous pride to the City of Philadelphia in their new home at the prestigious Kimmel Center for the Performing Arts where they are a resident company.

One of the highlights of last season for Mr. Nero included a one-night-only Gala concert featuring his original composition, Voyage into Space®. A dramatic work written for astronaut/narrator and symphony orchestra, Voyage into Space was performed at the Kimmel Center starring Senator and Astronaut John Glenn as Narrator. This unique, multimedia concert also featured music from sci-fi films, video screens and special effects. A good friend of Senator John Glenn, Nero was honored that excerpts were used as "wake-up" music for Mr. Glenn during his recent mission in space and that he was the Senator's guest at the lift-off at Kennedy Space Center.

Recent guest performances include return engagements with the National Symphony Orchestra at Kennedy Center, the New Mexico and Arkansas Symphonies, the Buffalo and Dayton Philharmonics, the Florida Orchestra, and the Pacific, St. Louis and Virginia Symphony Orchestras. This past summer, he performed at the Grand Teton Music Festival in Jackson, Wyoming, and at the brand new Todi Music Festival in Portsmouth, Virginia. He also returned to New York's Carnegie Hall, participated in a benefit at the Plaza Hotel for the Friar's Club honoring Harry Belafonte.

In the 2002 to 2003 season, performances will include seven concerts with the Jacksonville, Memphis, Savannah and Tucson Symphony orchestras, and the Buffalo and Rochester Philharmonics. Mr. Nero will rejoin his friends this season at the Florida Philharmonic for seven performances and perform across the country with his trio.

The Maestro continues his commitment to many important causes. Included in these causes is working for the funding of school music programs, fundraising for building new arts centers across the country, cancer research, dystonia, and autism.

He has received two GRAMMY Awards with ten nominations and recorded 66 albums including the million-selling Summer of '42, as well an EMMY award for his participation in an NBC Special S'Wonderful, S'Marvelous, S'Gershwin. He has performed throughout the world in some of the most prestigious concert halls including Kennedy Center, Carnegie Hall, Royal Albert Hall in London, and the Concertgebouw in Amsterdam.

Nero's early association with RCA Records produced 23 albums in eight years. His subsequent move to Columbia Records resulted in a million-selling gold single and album, Summer of '42 now available on CD. Cashbox Magazine named him the world's

"Number One Instrumentalist."

Nero's recordings over the last 12 years include three CD's with full symphony orchestra: On My Own, Classic Connections, and My Way. He recorded Peter Nero and Friends, which contains collaborations with Mel Torme, Maureen McGovern, and Doc Severinsen, among others. His latest CD's are romantic albums entitled Love Songs For a Rainy Day and More in Love. By popular demand, four of his earlier recordings have just been re-issued by BMG Special Products on two CD's.

Among Nero's long list of honors are four Honorary Doctorates and the International Society of Performing Arts Presenters Award for "Excellence in the Arts." He is also included on two historic walks of fame - one in Philadelphia, and one in Miami, FL. In 1999, he received the prestigious Distinguished Arts Award presented by Pennsylvania Governor Tom Ridge. Previous honorees were Bill Cosby, Marian Anderson, James Michener, Jimmy Stewart, Andrew Wyeth and Riccardo Muti.

The Brooklyn-born musician started his formal music training at the age of seven. By the time he was 14, he was accepted to attend New York City's prestigious High School of Music and Art and won a scholarship to the Juilliard School of Music. Constance Keene wrote in a recent issue of Keyboard Classics, "Vladimir Horowitz was Peter's greatest fan!"

His first major national TV success came at age 18 when he was chosen to perform Gershwin's Rhapsody in Blue on Paul Whiteman's TV Special. He subsequently appeared on many top variety and talk shows including 11 guest appearances on The Ed Sullivan Show and numerous appearances on Johnny Carson's Tonight Show. Hailed as the premier interpreter of Gershwin, Nero starred in the NBC Emmy Award winning 'S Wonderful, 'S Marvelous, 'S Gershwin. Other TV credits include performances on PBS-TV Piano Pizzazz, the National Symphony in Washington, D.C. on it's July 4th Special entitled A Capitol Fourth, the PBS-TV special The Songs of Johnny Mercer: Too Marvelous for Words with co-stars Johnny Mathis and Melissa Manchester.

Nero has been a devotee and advocate of consumer electronics and his expertise has led him to be dubbed a "technocrat" by leaders of the industry. If it's plugged in or battery operated, then Peter has it. While computers and other electronics have made him "the Gadget King," Peter still makes music on the traditional Steinway concert grand piano and has been an official Steinway artist for over forty years.

When not touring around the world, Nero makes his home on the east coast of the United States. He has two children -- Beverly, a successful actress residing with her husband in California and Jedd, a commercial real estate entrepreneur residing with his wife near New York City. Both children have made him a grandfather.

This is the first appearance of Peter Nero with The Compton Heights Concert Band. We are proud to bring him to St. Louis where he has countless friends and fans. Welcome Peter Nero!

Mr. Nero's recordings are available on the RCA, Sony/CBS, Arista, Concord, Bainbridge and Intersound/Platinum labels.

Mr. Nero plays the Steinway piano exclusively.

Visit Peter Nero's internet website at: <http://www.peternero.com>

**Exclusive Management: ICM Artists, Ltd.
Contact: Richard Corrado, V.P.**

**40 West 57th Street - 16th Floor - New York, NY 10019
Telephone: (212) 556-6871 / Fax: (212) 556-5677**

Edward Dolbashian

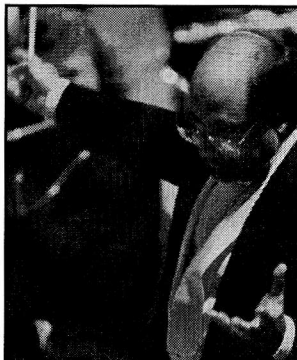


Photo by Mary Butkus

Edward Dolbashian has held the posts of Music Director of the Missouri University Philharmonic in Columbia, Missouri, since 1984; Music Director of the Alton Symphony Orchestra, in Alton, Illinois, since 1993; and the Compton Heights Concert Band since September 1998. He is also the conductor of the Clayton Symphony.

Mr. Dolbashian began his musical training as a student at New York's famed High School of the Performing Arts. He earned his degrees in oboe performance at the Hartt College of Music, Hartford, CT. His conducting career began as director of the Holyoke Symphony Orchestra in Holyoke, MA. He studied conducting at the prestigious Pierre Monteaux School of Orchestra Conducting in Maine, under Charles Bruck; and at Yale University as

student conducting assistant to Otto Werner-Mueller leading to a Master of Musical Arts degree in Orchestral Conducting. Further studies took place at the Tanglewood Institute, with Leonard Bernstein, Seiji Ozawa, Andre Previn, and Gustav Meier, and the Boris Goldovsky Opera Conducting Seminar. Mr. Dolbashian was a member of the Hartford Symphony for 11 years and was principal oboe of the Hartford Chamber Orchestra, the Goldovsky Opera Company, and the Hudson Valley Philharmonic. He debuted as oboe soloist in Town Hall, NY, NY, 1969.

St. Louis Hills Chorus

John Powel Walsh, Director

Director

John Powel Walsh

Assistant Director

Christopher Arbini

Accompanist

Mary Zubert

Sopranos

Sandy Ashby
Rachel Berry
Mary Ann Best
Paula C. Bohr
Dana Brennan
Nicole Collett
Cathy Crowe
Christina Crowe
Mary Louise Doetsch
Mary Kay Damazyn
Rachel Gold
Kay Heap
Melissa Krauss
Rebecca Kunce
Wanda Kuntz
Christine Makouske
Audrey Monahan

Amber Muchitello

Lisa Ramey
Barbara Rocchio
Rose Mary Suszko
Laurie Tretter
Heather Wessels
Terese Wiley

Altos

Anne Bisch
Elizabeth Christman
Jane Christman
Katie Christman
Megan Devine
Florence Gaffner
Margaret Gardiner
Emily Godefroid
Ellie Kaiser
Jessica Liermann
Cookie Muntges
Marilyn Reinert
Sally Sears
Maggie Sweeney
Nichole Tiggs
Katie Uthoff
Mary Wohltmann
Mary Zubert

Tenors

Tom Brennan
Matt Dailey
Ted Gierse
Steve Guebert
Swaine Kavi
Doug Landholt
Larry McEvoy
John Muntges
Milt Reinert
John Powel Walsh

Basses

Christopher Arbini
Eugene Barr
Paul Christman
Joseph E. Devine
Bradley Fox
Rick Kaiser
Warren Kaiser
Steve McMullen
Dan Monahan
Leslie Myers
Michael Orzel
Dave Rocchio

The Compton Heights Concert Band

Edward Dolbashian, Music Director & Conductor

Announcer

Lucy Schroeder

Flute

Sharon Cox
Michelle Hangge
Amanda Hanson
Elizabeth Jones
Carol Marsh
Kristen Marsh
Cassie Rosenberger

Piccolo

Carol Marsh

Bassoon

Harry Swanger

Oboe

Diane Lieser

Clarinet

Steve Abraham
Kelly Austermann
Ruth Bailey
Natasha Chancey
Meghan Currans
Katie French
John Kennedy
Bryan Kirchoff
Kelley Lemon
Catherine Reitz
Vicky Schorr
Becky Shiftlet

Bob Shiftlet
Jaynie Tatro
Dawn Wetzel

Bass Clarinet

Laura Pritchard

Alto Saxophone

Chris Florek
Nancee Glaser
Carl Lang
Brad Long
Keith Mitchell

Tenor Saxophone

Tom O'Brien

Baritone Saxophone

Doug Sharp

Trumpet

Lisa Blackmore
Mark Blackmore
Jacqueline Fanning
Paul Florek
Atena Kasprzak
David MacDonald
Galen Murphy
Robert Redmond
Steve Robinson
Robert Souza
George Stroud
Stephen Tatro
Ken Tiefenbrunn

April Zink

French Horn

Lynn Broeder
Jennifer Blankenship
Cheryl Hoard
Paul Thomas

Euphonium

Ryan Ross

Trombone

David Horger
Matthew McNiff
Tim Powers
Ed Redmond
Dan Redmond
Steve Stenzhorn

Bass Trombone

Lindsay Barth

Percussion

Gary Fischer
Adam Kopff
Tony Kroeger
Terry Schott
Wm.Shane Williams

Tuba

Chris Bertani
Jeff Hoard
Jon Schroeder

Cox and Sons Contracting Co Inc

PO Box 730

O'Fallon, Illinois 62269

618-632-7324

618-632-6477 fax

coxsons@htctech.net

"Comprehensive Contracting and Consulting"

The Compton Heights Concert Band

presents

A Holiday Spectacular with

Peter Nero

Michael Barnett, Bassist

George Mazzeo, Drums

and

Hugh Smith, Tenor

A Christmas Festival St. Louis Hills Chorus	Leroy Anderson
La Danza Be My Love Hugh Smith, Tenor	G. Rossini Arr. for Hugh by Jerry Robinson
Theme from "Summer of '42" Peter Nero, Michael Barnett, George Mazzeo	Michel Legrand
M'appari tutt'amor from "Martha" Che Gelida Manina from "La Boheme" Hugh Smith, Tenor	Friederich von Flotow/arr. L. Smith G. Puccini/arr. Leonard Smith
Rhapsody in Blue Peter Nero, Michael Barnett, George Mazzeo	George Gershwin
Intermission	
Medley from "The Wiz" Peter Nero, Michael Barnett, George Mazzeo	Charlie Smalls/arr. Peter Nero
Ave Maria Peter Nero and Hugh Smith	Franz Schubert
O Store Gud (How Great Thou Art) Hugh Smith, Peter Nero, St. Louis Hills Chorus	Swedish Folk Song/arr. E. Mitchell
Holiday Favorites St. Louis Hills Chorus	arr. Paul Lavender
Santa Claus is Coming To Town Peter Nero, Michael Barnett, George Mazzeo	Coots/Gillespie/arr. Peter Nero
Adeste Fidelis Hugh Smith, Tenor	arr. Martino
I'll Walk With God Hugh Smith, Tenor; St. Louis Hills Chorus	arr. Richard Hayman/Jerry Robinson
O Holy Night Hallelujah Chorus Hugh Smith, Peter Nero, Michael Barnett, George Mazzeo, St. Louis Hills Chorus	Adolph Charles Adam/Calvin Custer G.F. Handel/Chiaffarelli

Sing-Along Hallelujah Chorus

|: Hallelujah! Hallelujah! Hallelujah!
Hallelujah! Hallelujah! :|

|: For the Lord God Omnipotent reigneth.
Hallelujah! Hallelujah! Hallelujah! Hallelujah! :|

For the Lord God omnipotent reigneth.
|: Hallelujah! Hallelujah! Hallelujah! Hallelujah!
Hallelujah! Hallelujah! Hallelujah! :|

The kingdom of this world
Is become the kingdom of our Lord,
And of His Christ, and of His Christ;
And He shall reign for ever and ever,
For ever and ever, forever and ever,

King of kings, and Lord of lords,
|: King of kings, and Lord of lords, :|
And Lord of lords,
And He shall reign,
And He shall reign forever and ever,
King of kings, forever and ever,
And Lord of lords,
Hallelujah! Hallelujah!

And He shall reign forever and ever,
|: King of kings! and Lord of lords! :|
And He shall reign forever and ever,
King of kings! and Lord of lords!
Hallelujah! Hallelujah! Hallelujah! Hallelujah!
Hallelujah!

Special Thanks to:

Scott Segan, Tour Manager, Peter Nero
Karen Landrus, Personal Manager, Hugh Smith
Bonnie Browder, Director of Patron Services, St. Louis Symphony
John Powel Walsh, Director, St. Louis Hills Chorus
Drum Headquarters for providing Mr. Mazzeo's Trap Set
Scarab, Inc. for Brochure and CD/Video Printing
XPEDX for Paper
Gary's Fine Dining, 601 N. Grand, St. Louis, for Catering

**It dont mean a thing
if it aint got that swing!"**

Duke Ellington



St. Louis (314)644-0235 • St. Peters (636)928-0235 • www.DrumHeadquarters.com

And The Blue Ribbon Goes To...

THE COMPTON HEIGHTS BAND

For Another Outstanding Performance

From your Friends At:



REALTORS*

Three offices To Serve You

John Walsh, Broker 4924 Hampton Avenue St. Louis, MO. 63109-3109 (314) 352-1838	Blue Ribbon Commercial 14280 Manchester Road Manchester, MO. 63011-4508 (800) 486-1838	David Klotz, Broker 14278 Manchester Road Manchester, MO. 63011-4508 (636) 227-2550
--	---	--

FOOT AND ANKLE ASSOCIATES

PROUDLY SUPPORTS

THE COMPTON HEIGHTS CONCERT BAND

**DR. LINDSAY D. BARTH, FACFAS*
DR. CHRISTOPHER T. SLOAN, FACFAS*
DR. SAM T. WOOD, FACFAS*
DR. THOMAS SEHY, AACFAS**

**PHYSICIANS AND SURGEONS
OF THE FOOT AND ANKLE**

***BOARD CERTIFIED BY THE AMERICAN BOARD OF PODIATRIC SURGERY**

Four Convenient Locations:

**Tesson Ferry Foot and Ankle
12482 Tesson Ferry Rd.
St. Louis, MO 63128
(314) 842-3100**

**North County Foot and Ankle
662 Rue St. Ferdinand Rd (Graham Rd)
Florissant, MO 63031
(314) 921-1020**

**Desloge Foot and Ankle
334 N. State St. Suite B
Desloge, MO 63601
(573) 431-1595**

**St. Peters Foot and Ankle
1395 Jungermann Rd., Suite E
St. Peters, MO 63376
(636)-720-0190**

Be sure to look for Dr. Barth in the Trombone Section!

The Bandwagon

Notables Club

Anonymous
Hugh & Ann Bergman
Mr. Bob Blankmann
Carol Joy Brooks Memorial
Representative Russ Carnahan
Todd Christian, XPEDX
Catherine Manley Gaylord Foundation
Clifford Willard Gaylord Foundation
Mildred Dennis
Senator Patrick Dougherty
Tony Grasso, Grasso Bros., Inc.
Greg Greenwald, Scarab, Inc.
Robert Nicolay
Alderman Jim Shrewsbury

Sousafanatic \$1,000

Dr. Lindsay Barth,
Foot and Ankle Associates
Mrs. C.O. Hanes
Harrison Don King
John Howard Merle, CLU, CHFC,
LUTCF, MBA

Bandmaster \$500

Tony Grasso
Barbara B. Sterkel, M.D.

A. Bandmaster \$250

Marion Cadwallader
Bette & Andrew Constantin
Nancy Kranzberg
Susan and John Wilson

Band Director \$150

Rainey & Bob Fahey
Dressel's Pub
Dorothy J. Heagney
Don Henefer Jewelers
Mary Hippe
Matthias & Priscilla Jones
Anita Lieser
Loni & Steve Martin
Lynn & Stephen Muench
Chris Miranti
Joseph (Mike) Mount
& Mary G. Mount
Rosemarie & Richard Nelson
Tom & Alice Nelsen
Dan Shelton
St. Louis Hills Neighborhood Assoc.
George & Madie Stroud
Shirley Sweet
Ronald and Dianne Winney
Karen Wolf

Band Member \$75-\$100

Ed & Charlotte Abraham
AMS Controls Inc.
Joann Arpiani
Fred & Catherine Baumgarth
Mr. Donald H. Bergmann
Flora Bild

Anne & Dick Bischoff
Kenneth & Donna Bodart
Ann Boggiano
Hallye & Merle Bone
A. Jane Brandt
Joyce and Hartley Carlson
Christina Carr
Neysa Chouteau
Jim & Ginger Crooks
Steve Crouch & Rick Price
Peggy & Robert Drummond
Chris & Betty Eichenlaub
Evelyn & Tom Finnie
Vivian Franke
Alyce Goessling
Bob & Jeanne Haddenhorst
John & Dorothy Herweg
Dan & Pat Heuermann
Dr. Clark J. Hickman
Pat & Paul Holzen
Rich & Jean Iezzi
Marguerite Jost
Bryan Kirchoff
Ken & Jeanne Kirchoff
Engelbert & Barbara Knaus
Daniel Layne
Richard Lay & Tracy Lender
J. M. Lett
Anna Matthiesen
Mrs. Patricia Mazanec
Burchard Neel, Jr. & Ruth H. Neel
Steve and Bobbie Ohmer
Donald Paul
Pi Epsilon Alpha Chapter-
-Phi Beta Fraternity
Marian Reitz
The Robinson Family
Bob Rolling
David Royce
Peter C. Sharamitaro, Jr.
Dan Shelton
Jim & Michele Sherman
Nancee L. Schillinger
Charles & Christine Spomer
Art & Arlene Stauder
Betty & Dan Staufenbiel
Mr. & Mrs. David Steger
Ann Still
Robert & Jean Taylor
George F. Zeiss

Band Aide \$55

Walter & Judy Abell
Charles & Marjorie Amelotti
Shari & Andrew Barrett
Lorraine Bene
Marie & Fran Bergmann
Tom & Dana Brennan
Joyce & Hartley Carlson
Donald W. Cramer
James P. Cummings
Alex & Gloria Deeken
Mr. & Mrs. Jordan H. Eggers
Janice English

Dr. Richard A. & Mrs. Anice M.L. Etz
Nancy Anne Fellingner
Debbie Fellenz
Alyce Goessling
Frank & Doris Hartmann
Eleanor B. Hecht
Jackie & Roger Heitland
Richard Henerfer
Rich & Jean Iezzi
Ed & Marge Jardon
John Karel
Diana M. LaFata
David & Judy Lane
Barbara & Bob Lindecke
Lil Loehr
Sharon Majoros
Linda Meierhoff
Evelyn Michel
Marcella Milcic
Allen Milo
Dan Mitchell & Jackie Schmidt
Dr. & Mrs. James Oleskevich
Patrick & Vicky O'Neill
Lynn Osterkamp
Mike & Peggy Pollihan
Cathryn C. & Michael Rancilio
Ron & Jean Riess
Patricia Roerig
Dolores Roesch Bowersox Insurance
Earl & Arleen Roettger
Albert E. Schaefer
Chez Smit-ley
Mr. & Mrs. Ralph Soebbing
Mark & Nancy Svendsen
David E. & Lillian S. Stein
Laura Thomas
Sandra Thomas
Mike, Elyse, Stephanie, Sam Tillman
Mr. & Mrs. William A. Vogel
Mr. & Mrs. Eugene Vogt
Norman & Shirley Williams
Bill & Rose Wright

Senior Band Aide \$50

Howard C. Adele
Jean & Mickey Alessi
Barbara K. Anderson
Joann Arpiani
Margaret H. Atkins
Donald J. Backer
Betty Jane Barsachs
W. Richard & Virginia Bartz
Helen Bauer
E. Eugene-Margaret Beatty
Rich & Rose Behnen
Lorraine Bene
Marie & Fran Bergmann
Donald H. Bergmann
Mary Blumenkemper
Bud & Charlotte Bornholdt
Bob & Teddy Branom
Frances R. Breckner
Kenneth Breckner
Arnold Brody

Senior Band Aide \$50

Sister Lorraine Brueggemann
John & Florence Carroll
J.W. Clark
Bob & Sylvia Clobes
Don and June Crowther
Rayanne Cupps
Mrs. Marion L. Davis
Margaret Del Monaco
Ruth Depker
Mary Ann Dill
Nancy Van Dillen
Dorothy and Rose
Frank & Arleen Doss
Miriam & Eugene Dryden
Jean & Jerry Dudding
Harold & Mickey Duke
Bill & Rose Ebert
Jane E. Eck
Marie Eckert
Mary Jane Elliott
Virgil & Ruth Engel
Bob & Fae Felt
Ken & Joan Fiala
Lillian Finn
A & B Franke
Harlie M. Frankel
Dr. Raymond Frederick
Erline & John Frese
Reva M. Freund
Mrs. Nell Ganter
Bob & Judy Glasscock
Larry & Betty Gliedt
Bernadine & Robert Gregory
Mary C. Guinn
Walter C. Hammermeister
Lee & Pat Hanley
Jack & Dawn Harbison
Kuni Harmon
Sheila Harris
Marguerite E. Heider
Floris Hemker
Carl J. Henke
Eugenia C. Henke
Glenn & Mary Hensley
Ray & Bernice Hilgert
Norm & Adela Hoerber
Nellie Hohnsen
Marie-Louise Holbert
W. & D. Hungate
Vickie D. Kamadulski
Edwin Kastner
Jim & Jeannette Kille
Rosemarie Kirchoefer
Andy and Ruth Kocot
Joyce & Bill Kolnik
John W. Kourik

The Bandwagon

Marie Kowalski
Arnold & Janet Kreitman
Mr. & Mrs. Robert P. Laclede
Margaret Lange
Bernice Langing
Harry and Patricia Lenzen
Vernon & Versa Lindemann
Billie Linder
Ruth L. Lottmann
Bill & Elenor Luebbers
Lou & Nola Macchi
Anna Marie Mackey
Jeanette Mahacek
Mary J. Matushek
Mrs. E.F. McBride
Bernice R. Michener
Jim & Dolores Miller
Tom & Joanne Mudd
Rose & Bill Mueller
Chuck & Marie Murphy
Burchard & Ruth Neel
Wade & Corinne Norman
Helen Novak
Ralph E. Oliver
Melva Ollinger
Don Paulsen
Mary Ellen Pearson
Ray Pfeiffer
Clyde & Esther Phillips
Father David C. Polek, C.S.S.R.
Bob & Carol Powers
Virginia Puckett
Lucile Quernheim
Richard A. Rapp
Gilbert & Margaret Reed
Milt & Marilyn Reinert
Dorothy M. Rhoades
Gerald Rogers
Vi Saffo
Robert Sampson
M. Madelene Schatz
Ruth Schemkes
Frank Carl Seeber
Barbara & Nathan Simon
Sisters of the Most Precious Blood
Joan & David Skelton
George & Margaret Sneed
Phil & Carole Sotir
Genevieve Spencer
Betty Spitzer-Larson
Shirley Stoecker
Grace M. Stover
Betty & Bill Taylor
Harold & Kermin Thies
Dr. S.J. Treflitti
Audrey Unnerstall
Nancy Van Dillen

Bob & Marilyn Volk
Edmund L. Vorhes
Radmilla Vukovich
Wilma Weber
Mr. & Mrs. Wm. Wells
Ann & Wilma Wienold
Carl & Joe Wilson
Florentine Wozniak

Memorials

Betty Blankmann
Carol Joy Brooks
William B. Mazanec:
Rita S. Curtis
Janes Eichhorst
Bob & Rainey Fahey
Karen Hoffmann
Anita Lieser
Mary J. Matushek
Patricia J. Mazanec
Carolyn Otz:
Barbara J. Moore
Rodney R. Reinke:
Mary R. Reinke
Verna E. Schroeder
Alan & Dottie Akerson
Anheuser-Busch Corporate
Communications Department
Jean Bender
Pauline & James Brennan
Lorene Ferrario
Cindy, Paul, Elliot & Daniel Gross
Sandi Hagler
Donald & Nancy Hanson
George Dusty Himes
Al & Marilyn Horst
Joseph J. Kiske
Harrison Don King
Mr. Steve LeResche
James & Jane Orling
Vip Petrowski
Scott & Kathleen Powers
Ann Reichenbacher
Mary Reinke
Bob & Ruth Ann Shiflet
Carolyn J. Vandermay
Harold A. Spellmeyer
Joan Graf (Bunny) Wilhite
Tom Wilhite

Matching Gifts

AXA Foundation
Boeing Company
Champion International
Emerson Electric
Harris Interactive
Lucent Technologies
Mallinckrodt, Inc.
McGraw-Hill Companies
Norfolk Southern Foundation
Pfizer
SBC Foundation



THE
REGIONAL ARTS
COMMISSION



COMPTON HEIGHTS
CONCERT BAND
OF SAINT LOUIS

Strike Up The Band!

Join the Bandwagon! America's Band! America's Music!

The Compton Heights Band needs your help more than ever to keep the Sousa tradition of patriotic American music alive and well in St. Louis! Band members collectively donate over 12,000 hours of volunteer time to the Band, including volunteering at our two charity bingos every week! Can we count on your financial donation to meet the many expenses incurred to make the summer and winter concerts possible? Your tax deductible donation to join our Bandwagon means a lot to us. Membership includes recognition in programs, advance notice and other valuable benefits. Even if you can't join the Bandwagon, please send us whatever you can.

Here's what an "outsider" says: "St. Louis is my favorite example of "The Good Old USA" and the Compton Heights Concert Band is one of the reasons. Your band draws fans of band music from all age groups, young families, students and senior citizens who remember and enjoy our wonderful tradition of performing marches (classic American music). Whenever Mr. Swanger asks me to come back and guest conduct your band I say yes! I feel at home with the "family" feeling I get from the musicians I have gotten to know over the years. You have a musical jewel! Take good care of it!" James Christensen, Walt Disney Consultant and former Music Director.

I want to help the Band and be a Bandwagon member!

- _____ Notables Club (Charitable Remainder Trust, Stock, R.Estate)
- _____ \$1,000 Sousafanatic
- _____ \$ 500 Bandmaster
- _____ \$ 250 Assistant Bandmaster
- _____ \$ 150 Band Director
- _____ \$ 100 Band Member
- _____ \$ 55 Band Aide
- _____ \$ 50 Senior Band Aide (65+)
- _____ \$ _____ Other (no listing or t-shirt)



Please print your name as you would like it listed in the program.

Name: _____

Address: _____

City _____ State _____ Zip _____

Telephone: _____

VS/MC/AE/DS ChargeCard # _____

Expiration Date: _____

_____ Check enclosed (Payable to Compton Heights Band, Inc.)

Turn in at promo sales table or send to:

Compton Heights Band, Inc., 2335 So. Grand, St. Louis, Missouri 63104 (314) 776-2227, FAX (314) 772-9797 web site: www.chband.org

I want to order the Compton Heights Band Recordings!

Also Available in the Lobby Tonight!
In Time For Christmas, too!



Music is an excellent gift, especially with the beautiful voices of Hugh Smith and Robert Ellison!

1998, 1999 & 2000 are Holiday Concerts recorded at Powell Hall with Hugh Smith, tenor soloist.

"America's Favorites" "Best of Hugh Smith" and "Best of the Holidays" were Recorded at Powell Hall and Tower Grove Park in 2001.

___ 1 CD \$20 each Indicate year of Holiday Concerts: ___ '98 ___ '99 ___ 2000
OR ___ America's Favorites ___ Best of Hugh Smith ___ Best of the Holidays

___ 1 Video \$25 each 2001 (Powell Hall Concert)

SPECIAL SETS:

___ 2 CD set	\$35 / set of two	___ 2 Video set	\$50 / set of two
___ 3 CD set	\$45 / set of three	___ 3 Video set	\$60 / set of three
___ 4 CD set	\$55 / set of four	___ 4 Video set	\$70 / set of four
___ 5 CD set	\$62 / set of five	___ 5 Video set	\$75 / set of five
___ 6 CD set	\$66 / set of six	___ 6 Video set	\$84 / set of six

Save!

___ America's Favorites
___ Best of Hugh Smith
___ Best of the Holidays

Holiday Concerts Recorded at Powell Symphony Hall: Indicate Years ___1998 ___1999 ___2000
Name: _____

Address: _____

City _____ State _____ Zip _____ - _____

Phone (Daytime) _____ Phone (Evening) _____

Charge (Visa, Mastercard, American Express, or Discover)

Account Number: _____

Expiration Date: _____

Add \$5 for shipping and handling (if ordering by mail). Total Amount \$ _____

Checks Payable and Send to:

Compton Heights Band, Inc.

2335 So. Grand

St. Louis, Missouri 63104

Phone: (314) 776-2227 FAX: (314) 772-9797